



SUCCESS STORY

Ark-Les Corporation

United States | Industry | Intranet

BoostEdge Helps an SMB, Ark-Les, Do a Day's Work

"We can now accomplish one day's work in one day. The small investment in BoostEdge allows us to completely realize the proper return on investment in our PeopleSoft-JD Edwards system upgrade. And for us on the IT side, we are preserving our server's capacity with almost no administrative attention."

Mark Daughtrey, Director of Information Technology

Description of the Business

Ark-Les is one of those SMBs (small-medium businesses) you may never have heard of, not because it isn't a leader in its industry, but because it is a privately held smaller company. And because it manufactures components that go into brand name dishwashers, washing machines and dryers, among other products, for such giants as GE, Whirlpool and Maytag, you may never see the Ark-Les label. But Ark-Les' competitive advantage is that it manages its supply chain exceedingly well-meeting the just-in-time demands of its customers for the electro-mechanical switches and controls that make home appliances, hand tools and automobiles run correctly.

The Problem

In order to maintain that competitive edge, Ark-Les needed to web-enable its manufacturing system, upgrading from client-server technology to PeopleSoft's JD Edwards OneWorld Xe, release 8.1. Despite careful planning, the process of implementing OneWorld Xe showed that going into full production would cause an instant disaster. According to Mark Daughtrey, Ark-Les' Director of Information Technology, ". . . throughput screeched to a halt. We could not go live unless we could solve this problem". Response time for fewer than 50 concurrent users worldwide plummeted to an unacceptable 15-20 seconds per page at Ark-Les' four US plants and factories in Mexico and China. Opening a 200-page report took 4 minutes.

Solving the Problem

Ark-Les tried using software-based compression on its WebSphere server. The amount of data reduction was trivial and consumed too many processing cycles. Adding compression to its routers could barely attain a 2X reduction in data flow, hardly sufficient to impact response time. Ark-Les found that the capital cost of the equipment was prohibitive. Moreover, it would have meant «hands having to touch each router while in production», a management burden with the potential for high ongoing operating costs. Upgrading the routers at each site would also have seriously delayed the project. Doubling bandwidth was also considered. This alternative was also found to be cost-prohibitive and upgrading its VPN would also have taken many months to implement.



Key Benefits

- Response time for end users improved from 15-20 seconds to 3-4 seconds using BoostEdge
- By facilitating high productivity among its worldwide users, its investment in the strategic enterprise application upgrade was protected
- By contributing to the on-time implementation of the One World Xe project, Ark-Les enhanced its ability to serve its customers
- Ark-Les maintains its competitive edge
- Avoided other high cost, high edge burden alternatives.

" Reports, which had been taking 4 minutes to access, now took only 12 seconds ! "



SUCCESS STORY



Ark-Les Corporation

BoostEdge multiplied the bandwidth by 4.82

Reduction Overview					
Mime-Type	Hits	Incoming (bytes)	Outgoing (bytes)	Ratio	Savings (%)
text/html	224910	1.67 G	344.28 G	4.97	79.89
image/gif	37357	37.06 M	17.16 M	2.16	53.70
image/jpeg	9	88.98 k	14.87 k	5.98	83.29
image/png	0	0	0	1.00	0.00
* / *	142530	272.46 M	58.37 M	4.67	78.58
Total	404806	1.97 G	419.81 M	4.82	79.23

Environment

- Main application : Enterprise One of PeopleSoft/JD Edwards One World Xe version 8.1
- Web server IBM WebSphere
- 1 BoostEdge 600
- 50 concurrent users, 4 US plants and factories in Mexico and China

“Adding one user then several, then all its super-users, BoostEdge showed an immediate beneficial effect on response time and user productivity. There were no untoward side effects and no administrative burden outside of gathering and assessing data”

Mark Daughtrey,
Director of Information Technology

ActivNetworks
Mini Parc du Verger
Bât. L - 1, rue de Terre Neuve
BP 127, Courtaboeuf 1
F91944 Les Ulis Cedex - FRANCE
Phone :+33 (0)164 864 444
Fax : +33 (0)160 920 142

www.activnetworks.com
v2- fev 05

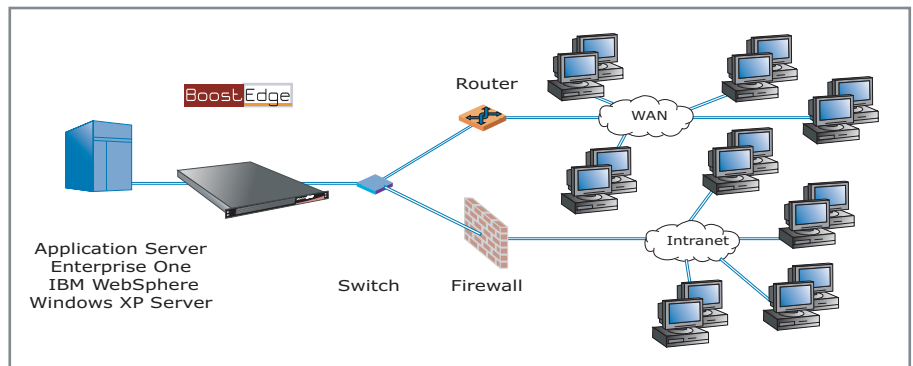
© 2005 ActivNetworks. All rights reserved. BoostEdge™ and Activa™ are registered trademark of ActivNetworks. All other product names mentioned herein and distribution packages are trademarks of their respective owners. Information in this document is subject to change without prior notice.

Solving the Problem

Ark-Les asked ActivNetworks to sponsor a test of its BoostEdge appliance. Because BoostEdge is inserted transparently to users, servers and other elements in the data chain, Ark-Les was able to safely test this alternative in the production environment. Installed in less than an hour, Ark-Les was able to immediately assess the impact of BoostEdge on real users. Adding one user then several, then all its “super-users”, BoostEdge showed an immediate beneficial effect on response time and user productivity. There were no untoward side effects and no administrative burden outside of gathering and assessing data. Ark-Les opted to purchase a BoostEdge 600 to solve its problem.

Benefits

The main objective, high user performance to meet the strategic objective of supply chain excellence was instantly achieved. Response time for end users improved from 15-20 seconds to 3-4 seconds using BoostEdge. Reports, which had been taking 4 minutes to access, now took only 12 seconds! These results were realized because dataflow over the WAN was reduced by 4.5X. According to Mark Daughtrey, *“We can now accomplish one day’s work in one day. The small investment in BoostEdge allows us to completely realize the proper return on investment in our PeopleSoft-JD Edwards system upgrade. And for us on the IT side, we are preserving our server’s capacity with almost no administrative attention”.*



Ark-Les network architecture - Intranet WAN & VPN - Peoplesoft Enterprise One

About BoostEdge

BoostEdge for IBM eServer xSeries and BoostEdge Activa are appliances dedicated to accelerating and encrypting enterprise web applications, websites and web servers. BoostEdge triples the delivery speed of applications, websites and secure web pages (HTTPS/SSL) and reduces network dataflow by 75%.

BoostEdge is installed as a front-end to the web server(s) and is usually up and running in an hour. BoostEdge is fully transparent to network equipment and web application servers as well as users. In addition to HTTP and HTTPS acceleration, BoostEdge protects the web servers from low-level network attacks such as Denial of Service (DDoS) and comes with an embedded fail-over card to prevent server inaccessibility. A single BoostEdge can benefit all company workstations. Since BoostEdge takes processing load off the web servers and reduces the data volume on the WAN, an organization can more effectively control costs. BoostEdge often permits new applications and users to be added without adding network capacity or supplemental server hardware and software.

ActivNetworks' web acceleration solutions are 100% compatible with and effective on application servers and web applications such as IBM WebSphere, Oracle, PeopleSoft, Business Object, Siebel, BEA, SAP, Hyperion, etc. and proprietary developments in XML, ASP, JSP, CGI, PHP, etc. ActivNetworks' acceleration solutions have greatly improved the performance of essential enterprise applications, e-commerce sites and hybrid networks (intranets, extranets, ASP hosting, VPNs, satellite networks, ISPs and mobile users), proving to be operationally sound and cost-effective at more than 300 clients worldwide.

